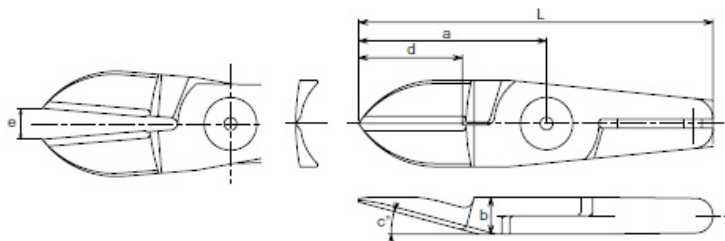


Quasi-standard products

R blades for plastic

A large R is provided in the cross section for gate processing where the cut end must not be left. An angled blades can be selected in accordance with the installation angle of the main unit.

Plastic



Model No.	Size (mm)						Weight (g)	Material	Application model
	a	b	c(*)	d	e	L			
N20AA239	52.3	12	40	27	14	112.3	195	Special alloy steel	GT-N10 / NS10 GT-N20 / NS20 GT-N20 / NS20 NGT-20 / NS20 GT-N30 / NS30 / NR30



PART NUMBER

N20AA239